

**2018**  
**Clark County MSHCP**  
**Annual**  
**Project Progress Report**  
**Symposium**

**Kenneth Sanchez**  
**WRA Inc.**  
**August 15, 2018**

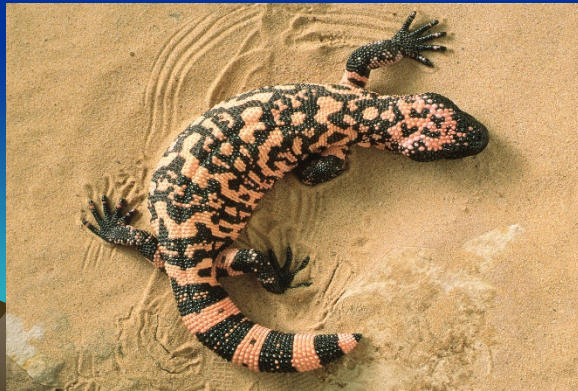


# Permit Amendment Update

- **Contract awarded March 2017**
- **Project Kick off early May 2017**
- **Coordination meeting with Clark County and USFWS Las Vegas staff - late May 2017**
- **Annual Workplans for 2017 and 2018 submitted**
- **Climate Change workshop on October 2017**
- **Chapters 1 (Introduction), 2 Project Description, 4 (Environmental Setting – Biological Resources) – Drafts submitted to Clark County**
- **Covered Species evaluations and Draft summary species recommendations submitted**
- **Completed Climate change worksheets for 22 species**
- **Reviewed Habitat predictor and functional models from other HCPs and conservation efforts and submitted a report**
- **MBTA review current policies and statutory requirements for HCPs and permits**

# Species Recommended for Coverage

- REPTILES
- *Desert tortoise (Gopherus agassizii)*
- *Gila monster (Heloderma suspectum cinctum)*



# Species Recommended for Coverage

- **MAMMALS**
- Desert pocket mouse (*Chaetodipus penicillatus*)
- Townsend's big-eared bat (*Corynorhinus townsendii*)
- Spotted bat (*Euderma maculatum*)



# Species Recommended for Coverage

## BIRDS

- Golden eagle (*Aquila chrysaetos*)
- Western burrowing owl (*Athene cunicularia hypogea*)
- Yellow-billed cuckoo (*Coccyzus americanus*)
- Glided flicker (*Colaptes chrysoides*)
- Southwestern willow flycatcher (*Empidonax traillii extimus*)
- Loggerhead shrike (*Lanius ludovicianus*)
- Ridgeway's rail (*Rallus obsoletus yumanensis*)
- Bendire's thrasher (*Toxostoma bendirei*)
- Le Conte's thrasher (*Toxostoma lecontei*)
- Arizona Bell's vireo (*Vireo bellii arizonae*)





# Species Recommended for Coverage

## PLANTS

- Sticky ringstem (*Anulocaulis leiosolenus* var. *leiosolenus*)
- Las Vegas bear poppy (*Arctomecon californica*)
- Threecorner milkvetch (*Astragalus geyeri* var. *triquetrus*)
- Alkali Mariposa lily (*Calochortus striatus*)
- Blue diamond cholla (*Cylindropuntia multigeniculata*)
- Silverleaf sunray (*Enceliopsis argophylla*)
- Pahrump Valley buckwheat (*Eriogonum bifurcatum*)
- Las Vegas buckwheat (*Eriogonum corymbosum* var. *nilesii*)
- Sticky buckwheat (*Eriogonum viscidulum*)
- White margined beardtongue (*Penstemon albomarginatus*)
- Parish phacelia (*Phacelia parishii*)
- St. George blue-eyed grass (*Sisyrinchium radicum*)
- Joshua tree (*Yucca brevifolia*)



© Nevada Native Plant Society



Photo Credit: Gina Glenn





